

## Prospecting The Americas



**Alianza Minerals Ltd.** ("Alianza"), is a prospect generator focused on the Americas, particularly the Cordilleran regions that characterize western North and South America. Alianza has five projects in Nevada, six in the Yukon, one in B.C and two in Peru, with the flexibility to generate and acquire new projects in the Americas as opportunities arise.

### Financial Snapshot

Trade Symbol: TSX-V: ANZ

Share Price: \$0.07

Shares Outstanding: 60.3 M

Fully Diluted: 85 M

### Management

Mark T. Brown, CPA, CA  
Executive Chairman

Jason Weber, P.Geo.  
President, CEO & Director

Winnie Wong, CPA, CA  
CFO & Corp. Secretary

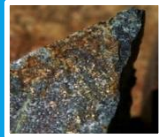
### Directors

Marc G. Blythe, MBA, P.Eng.

Geoff Chater, B.Sc.

Craig Lindsay, MBA, CFA

John R. Wilson CPG, M.Sc.



**TIGHT SHARE STRUCTURE**  
60.3 million shares outstanding



**SUCCESSFUL DISCOVERY TEAM**  
90+ years of experience



**KEY JURISDICTIONS**  
Nevada, Yukon, BC



**HALDANE SILVER, YT**  
2019 Program – Trenching & Drilling



**SEEKING JV PARTNERS**  
Gold – Nevada, Silver – Yukon, Gold – BC

# PROPERTY PORTFOLIO

## NEVADA



**HORSETHIEF – Sediment-Hosted Au**  
Drilling slated for geochem/geophysical targets. Permit received.

**BP – Sediment-Hosted Au**  
Gold-bearing jasperoid, pathfinder element geochemistry & favourable structure

**BELLVIEW – Sediment-Hosted Au**  
Three target areas in vicinity of/same geology as Bald Mountain Gold Mine

**EAST WALKER – Walker Lane Au**  
Epithermal Au - 20 m chip avg. 1.4 g/t Au

**ASHBY – Walker Lane Au**  
2% NSR – Leased to Nevada Canyon Gold Corp.

## YUKON



**WHITE RIVER - Porphyry/Epithermal Au**  
High grade Au-Ag-Cu bearing veins

**PROSPECTOR MTN - Porphyry/Epithermal Au**  
High grade Au-Ag-Cu bearing veins and porphyry potential

**MOR - VMS Au-Ag-Zn-Pb**  
2008 drilling intersected 1.15m of 6.74% Zn, 0.58 g/t Au, 51 g/t Ag

**GOZ CREEK - Mississippi Valley Type Zn-Ag**  
2008 drill hole returned 40.68m of 13.55% Zn, 29.88 g/t Ag

**TIM - Manto Style Ag-Pb**  
352.4 g/t Ag, 9.12% Pb over 4m in trenching

## B.C



**KRL – High grade gold-bearing quartz veins**

Located in BC's prolific Golden Triangle

Road and power within 5 km of property

Historic sampling includes 64 g/t gold over 60 cm, 194 g/t over 50 cm, 123 g/t gold over 50 cm from consecutive one-metre spaced samples in trenching.

At least 11 veins noted over 400 by 600 metre area.

## LATIN AMERICA



**SAN PEDRO, MEXICO Royalty (1%)**  
High sulphidation Au target in Jalisco State

**YAGO, MEXICO Royalty (1%)**  
A low sulphidation Au target in Nayarit

**MESQUITES, MEXICO Royalty (1%)**  
Early stage target in Nayarit, prospective for epithermal Au and Ag deposits

**YANAC, PERU**  
Drill-ready Cu-Mo porphyry prospect, 60 km from coast and good infrastructure

**PUCARANA, PERU – Royalty (1.08%)**  
Au & Ag quartz veins adjacent/on trend with Buenaventura's Chipmo Gold Mine