

Prospecting The Americas



Alianza Minerals Ltd. ("Alianza"), is a prospect generator focused on the Americas, particularly the Cordilleran regions that characterize western North and South America. Alianza has five projects in Nevada, six in the Yukon, one in B.C and two in Peru, with the flexibility to generate and acquire new projects in the Americas as opportunities arise.

Financial Snapshot

Trade Symbol: TSX-V: ANZ

Share Price: \$0.05

Shares Outstanding: 82.4 M

Fully Diluted: 127.8 M

Management

Mark T. Brown, CPA, CA
Executive Chairman

Jason Weber, P.Geo.
President, CEO & Director

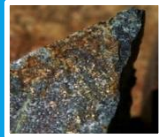
Winnie Wong, CPA, CA
CFO & Corp. Secretary

Directors

Marc G. Blythe, MBA, P.Eng.

Craig Lindsay, MBA, CFA

John R. Wilson CPG, M.Sc.



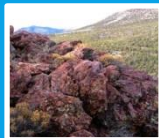
KEY JURISDICTIONS

Nevada, Yukon, BC



SUCCESSFUL DISCOVERY TEAM

90+ years of experience



HORSETHIEF GOLD PROJECT, NV

Drilling program commencing early 2020



HALDANE SILVER, YT

Drilling to follow up 2019 Bighorn Discovery



2 PROJECTS OPTIONED OUT

1 in Nevada, 1 in the Yukon

PROPERTY PORTFOLIO

NEVADA



HORSETHIEF (JV) – Sediment-Hosted Au
Potential Long Canyon look-alike. Five drilling targets identified. Permit in hand. Optioned to Hochschild Mining.

BP – Sediment-Hosted Au
Gold-bearing jasperoid, pathfinder element geochemistry & favourable structure.

BELLVIEW – Sediment-Hosted Au
Three target areas in vicinity of/same geology as Bald Mountain Gold Mine.

EAST WALKER – Walker Lane Au
Epithermal Au - 20 m chip avg. 1.4 g/t Au

YUKON



HALDANE SILVER – High Grade Silver Veins
Historic Keno Hill Silver District. Mining in 1920's recovered ~25 tonnes averaging 3,100 g/t Ag. First drillholes by Alianza discovered new vein targets.

WHITE RIVER - Porphyry/Epithermal Au
High grade Au-Ag-Cu bearing veins

PROSPECTOR MTN - Porphyry/Epithermal Au
High grade Au-Ag-Cu bearing veins and porphyries

GOZ CREEK - Mississippi Valley Type Zn-Ag
2008 drill hole returned 40.68m of 13.55% Zn, 29.88 g/t Ag

TIM (JV) - Manto Style Ag-Pb
352.4 g/t Ag, 9.12% Pb over 4m in trenching
LOI with Coeur Mining.

B.C



KRL – High grade gold-bearing quartz veins

Located in BC's prolific Golden Triangle

Road and power within 5 km of property

Historic sampling includes 64 g/t gold over 60 cm, 194 g/t over 50 cm, 123 g/t gold over 50 cm from consecutive one-metre spaced samples in trenching.

2019 exploration identifies 800 m long corridor prospective for high grade gold.

LATIN AMERICA



SAN PEDRO, MEXICO Royalty (1%)
High sulphidation Au target in Jalisco State

YAGO, MEXICO Royalty (1%)
A low sulphidation Au target in Nayarit

MESQUITES, MEXICO Royalty (1%)
Early stage target in Nayarit, prospective for epithermal Au and Ag deposits

YANAC, PERU
Drill-ready Cu-Mo porphyry prospect, 60 km from coast and good infrastructure

PUCARANA, PERU – Royalty (1.08%)
Au & Ag quartz veins adjacent/on trend with Buenaventura's Chipmo Gold Mine